

Molly Single PANEL Cabin Bed

Assembly Instructions **IMPORTANT – READ CAREFULLY –** **RETAIN FOR FUTURE REFERENCE**

Safety First !

The top surface of the mattress must not be above the line, marked on the frame (Maximum height: 20cm). The size of the mattress required is detailed below:

Standard Single, Standard Length - Mattress size 90cm by 190cm

Small Single, Standard Length - Mattress size 75cm by 190cm

Standard Single, Short Length - Mattress size 90cm by 160cm

Small Single, Short Length - Mattress size 75cm by 160cm

High beds and the upper bed of a bunk bed are not suitable for children under six years due to risk of injury from falls.

Be aware of the danger of young children (under 6) falling from upper bunk.

Beds should not be used if any structural part is broken or missing.

Bunk beds and high beds can present a serious risk of injury from strangulation if not use correctly. Never attach or hang items to any part of the bunk bed that are not designed to be used with the bed, for example, but not limited to ropes, strings, cords, hooks, belts and bags.

Children can become trapped between the bed and the wall, a roof pitch, the ceiling, adjoining pieces of furniture (eg cupboards) and the like. To avoid risk of serious injury the distance between the top safety barrier and the adjoining structure shall not exceed 75mm or shall be more than 230mm.

Always ensure that guardrails, ladder and other components are maintained in the proper position and free from damage, and all the screw fixings tight.

Always use the ladder for entering and leaving the upper bunk.

Do not allow horseplay on or under the bed and prohibit jumping on the bed.

Use a nightlight as an added safety precaution for persons under the upper bunk.

Use guardrails on both sides of the upper bunk.

Every bedroom must have at least one opening window. Ventilation of the room is necessary in order to keep the humidity low and to prevent mould in and around the bed.

The bed complies with BS EN 747-1: 2012+A1 :2015 safety standards

IMPORTANT: DO NOT DISPOSE of the packaging until you are satisfied with your purchase. . Please keep all cardboard until fully assembled.



TOP TIPS - TOP TIPS

Read before you start assembly



Locating the Dowel Rods

To keep the bed from rattling all the dowel holes have been slightly mis-drilled by a couple of mm. When you push parts together the dowels will straighten and pull together to ensure a tight fit. Whenever you locate a dowel on the hole NEVER push it all the way in, leave it so it is loose and can be aligned with the second locating hole.

Push them all the way in and they will not line up.



GLUE SACHET INCLUDED

We have included a sachet of glue.

THIS IS NOT TO BE USED with the dowel rods.

Open the sachet and empty into a plastic container.

Whenever you connect a confirmat bolt (D) or a connector bolt (B) into a barrel bolt (c) dip the end of the bolt in the wood glue and screw in as normal. This will act as a lock tight and prevent the bolt from working loose.



Clean out the Pre-drilled Holes

You have brought a solid pine product. During the drilling process there may be sawdust still in the holes.

BEFORE you start assembly clear these holes with one of the bolts. Push the bolt through each hole, this will dislodge any sawdust or debris that could interfere with fixing the bed.

Applying a Finish to the Beds

The bed can be used in a natural form. However if you are applying a stain or finish we advise that you build the bed first.

When you are happy with your purchase then put a sheet under the product and apply your stain/paint to the manufacturers recommendations.

NOTE: we are unable to accept the return, under any circumstance once a finish has been applied. By painting the bed you have deemed to accept the quality.

Corner Posts -

Make sure the WHITE Mark is facing upwards when laid on the floor

Headboard Facias-

These are colour coded

Please position as follows:

RED - At the top

BLUE - At the bottom



How to identify your parts and fixings

All our products have four attachment methods. These are colour coded, at the end of each part you will find a marker pen marking either RED or BLUE



RED MARKING/FIXINGS

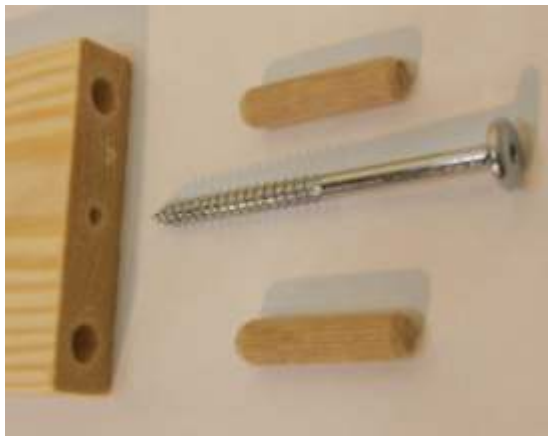
The part will have a red marker pen marking on the end.

Hole / Bolt configuration:

One large dowel hole - Place for large dowel

One small hole - Place for large 90cm confirmation bolt D

Areas used: top headboard facia



BLUE MARKING/FIXINGS -

The part will have a blue marker pen marking on the end.

Hole / Bolt configuration:

TWO large dowel holes - Place for large dowel

One small centre hole -

Place for large 90mm connector bolt D

Area Used: Bottom headboard Facia



SIDE RAIL MARKING/FIXINGS

The part will have a blue marker pen marking on the end.

Hole / Bolt configuration:

TWO large dowel holes - Place for large dowel

One small centre hole - Place for large 90mm connector bolt C

Facing access hole - Place for barrel bolt B



INSERTING COLOUR PANEL

When locating the colour panel please ensure the tongue of the panel is located at the back, ie on the floor during assembly. This then covers unused holes within the corner post.

Contents List



Packing Note: Box 1 of 2

Molly 3ft Single-LONG

Description	Required
Part ML - Left Hand Corner Post	<input type="text" value="2"/>
Part MR - Right Corner Post	<input type="text" value="2"/>
Part 1- Side rail	<input type="text" value="2"/>
Part 2- (Red)Top Back Guard Rail	<input type="text" value="1"/>
Part 3- (white) Bottom Back Guard Rail	<input type="text" value="1"/>
Part 4- Ladder Steps	<input type="text" value="3"/>
Part 5- Guard rail Support (11)	<input type="text" value="2"/>
Part 6- (Red) Front Top Guard Rail	<input type="text" value="1"/>
Part 7 (white) Front Bottom Guard Rail	<input type="text" value="1"/>
Part 20- Long Ladder Strut	<input type="text" value="1"/>
Part 21- Short Ladder Strut	<input type="text" value="1"/>
Part 13- 3ft Blue GROOVE Headboard	<input type="text" value="2"/>
Part 15- 3ft Red GROOVE Headboard	<input type="text" value="2"/>
Part WP30 - <input type="text"/> PANEL 3ft	<input type="text" value="2"/>
FIXING KIT & INSTRUCTIONS 32H	<input type="text" value="1"/>

Box 2 - 3ft Base Slats

Fixing List

Note: The quantities below are the correct amount to complete the assembly. In some cases more fittings may be supplied than required.

	Fixing A1 Small sachet of glue for bolts B & C (NOT dowels) Number Required 1		Fixing H 90mm ladder silver hook To connect ladder to bunk Number required 2
	Fixing A2 70mm square wooden rail or base slat spacer Number Required 1		
	Fixing A 40mm by 10mm Wooden Dowel Used to connect parts Number required - 0		Fixing K Allen Key To connect bolts Number Required 1
	Fixing B 14mm Barrel bolt/Nut Used to connect with bolt C Number required 4		Fixing L Small silver 15mm screw Number Required 6
	Fixing C 90mm Connector bolt Used to connect with bolt B Number required 4		
	Fixing D 90mm Confirmat Bolt Used to connect headboards Number required 11		
	Fixing E 30mm silver Screw Used to attach base slats Number required 30		Fixing Q 35 mm small black screw Number Required 6
	Fixing F 50mm Confirmat Bolt Used to attach ladder steps Number required 12		White Plastic caps To plug spare ladder holes Large 3 Small 1

CUSTOMER CARE

We have checked all parts to ensure they are free of damage. However timber is a natural, living product. Occasionally timber can still be adjusting to humidity, for this reason a crack or stretch mark may appear after the product has been packaged.

Strictly Beds and Bunks however have a
FREE PARTS REQUEST

service in this unlikely event. You need to order a part please go to our FREE help desk www.strictlyhelpdesk.co.uk.

Assistance: help@strictlybedsandbunks.co.uk

Assemble The Two Headboards



We need to build the two headboards at either end of the bunk bed. You will find four corner posts, two marked L-left, two marked R-right.. Separate into two piles, one left and one right.

Get one left and one right and lay as so face down on the carpet as shown above. You will note a white chalk mark on each post, very important. This indicates the top of each post and the row of holes that accepts the side/ guard rails.

You will have two headboard facias marked red and blue and a colour panel per headboard. Place the blue facia at the bottom, then insert the panel the red facia at the top. The colour panel has a tongue and groove lip, ensure this at the bottom facing downwards. Once in position Insert these as per this picture. The fixings required for each insert are as follows:

Red: 1 x large confirmat 1 x Dowel rod

Blue: 1 x large confirmat 2 x Dowels

Now we need to attach the siderails and



Find the Two guard rails and locate the dowel rods to each.
REMEMBER DO NOT push the dowels all the way in.



With a second person we now need to connect a side rail at the rear of the bed. Place both the complete headboards upright. Important, the white chalk marks **MUST** be facing inwards.

Using the block of three holes attach the siderail. **DO NOT** over tighten. Dip bolt C into some glue first (this will act as a lock tight when dry) simply attach using bolt B We will tighten these up later, we still need to get the guard rails in.

Now we need to attach the back guard rails.



Now we need to attach the back two guard rails. These are identified RED for the top rail and WHITE for the bottom. Again using a second person fix the dowel rods where required. Insert the white guard rail (two dowel holes per end). Now get the red top guard rail (one dowel and one bolt D) and locate.

TIP. DO NOT screw in bolt D until last. Once in place first tight bolts B & C on the siderail. Once push in tight dip bolt D into some glue and screw in.



Once the back guard and siderails are in place we need to attach the front siderail. Again using bolts B & C.

Dip bolt C into some glue and attach. This time you can tighten the bolts.

Now we need to Build and The Ladder



Select the long ladder strut (part20) and the short ladder strut (part 21) and position as shown with the ladder steps (part 4)

When installed the ladder rungs need to be tight. The holes on the ladder struts have been mis- drilled by 2mm to ensure a tight fitting. Locate each ladder to the holes on the long struts. Using the small confirmat bolt dip them in the glue and push BOTH through the strut, you will note they will not quite meet the hole on the step.

To meet the holes on the step the bolts will be at an angle, this is correct. Locate these over to the holes and screw both the bolts in evenly. This is important, **DO NOT** tighten one at a time. Both together, The bolts will align and pull the ladder step in. This ensures a tight fixing. Complete one side then go to the next.



We now need to think what side is the ladder going on. This makes a difference to which side we attach the ladder hooks. If you want the ladder to the **RIGHT** side of the bed. Lay the ladder flat on the floor with the long strut to your **LEFT**. If you want the ladder to the **LEFT** side of the bed. Lay the ladder flat on the floor with the long strut to your **RIGHT**.

We now need to mark where the ladder hooks go. So from the **BOTTOM** measure and place a pencil mark as follows:

Long strut - first mark 80mm, second mark 1170mm

Short strut - first mark 80mm, second mark the very top of strut.

Now position the ladder hooks as shown to the marks and attach using the small fixing screw L

Section : Attach the ladder, left or right ?



We now need to position the ladder. There are two methods.

Method ONE- Select one of the front guard rails (part6)

If you wish the ladder to go on the **RIGHT** side of the bunk position the front guard rail flush from the left corner post. At the end of the guard rail make a pencil mark. If you wish the ladder to go to the **LEFT** side position the front guard rail flush to the right corner post and make your mark.



Method Two- If the ladder is to go on the right side measure 40cm from the right corner post and make your mark. If the ladder is on the left post measure 40cm from the left post and make your mark.



Now we have attached the ladder hooks we locate the ladder. Place the long ladder strut to the outside of the 40cm pencil mark (furthest away from the corner post). This will mean the net distance between the corner post and the long ladder strut will be 40cm.

Using the small screw (L) attach to the side rail.

Now we need to attach the front Guard Rails



First select the bottom front guard rail (part 7) marked white. Using fixings A attach to the corner post. Rest the spacer bar (fixing A2) as shown in the picture at the end of the rail. This will ensure the correct gap is allowed.

Now using the long black fixing Q screw through from the inside of the guard rail into the long ladder strut.

Now select the top front guard rail (part 6) marked red. Using fixing A and D and attach to the corner post. Now position the spacer bar on top of the bottom guard rail and again attach using fixing Q

Section : Now we attach guard rail supports



These two rails prevent the guardrails from being forced apart, very important. Using a tape measure find the centre of the back guard rail and centre of the front guard rail.

Make a small pencil mark. Then attach each guard rail support to the front using the screws provided. These cover both the two guard rails and secure onto the side rail.

Attach The Base Slats



We Now need to attach the base slats.

You will have twelve extra wide base slats. Push the first slat tight with the footboard corner posts, then using the base slat spacer block evenly space out the remaining base slats. **DO NOT SCREW IN PLACE YET.**

Now push the slats flush to the left hand side rail and screw in (do not screw the right hand side yet). Now go to the right hand side and start with the slat near the centre. Push the side rail in so the slat is flush, then fix using the screw. This aligns the side rail. Now fix the remaining base slats.

Section : Added safety



Important Notice- Due to the nature of the bed, ie being top heavy you must secure the bed to the skirting or wall. Uneven floors or over active use can cause the bed to move. You cannot use the bed until the brackets have been secured.

Using the corner bracket fixing P, locate to the rear corner posts under the side rail. Use a base slat screw and attach to the bed. Now attach to the wall to secure. Please note we have not supplied wall fixings due to the many fixing types available. Consult your hardware store for the best type.