

Single Size Kit B
Plus extra K3 Kit
Instructions: RipVan
(Version Nov 2021)

RipVan Day Bed (All Sizes)

Assembly Instructions
**IMPORTANT – READ CAREFULLY –
RETAIN FOR FUTURE REFERENCE**

CUSTOMER CARE

We have checked all parts to ensure they are free of damage. However timber is a natural, living product. Occasionally timber can still be adjusting to humidity, for this reason a crack or stretch mark may appear after the product has been packaged.

Strictly Beds and Bunks however have a **FREE PARTS REQUEST** service in this unlikely event. You need to order a part please go to

Parts Portal - www.strictlyhelpdesk.co.uk.
Email Assistance: help@strictlybedsandbunks.co.uk



Using the Camera on your phone scan this barcode to take you our after sales. You can find various options as regards assistance on this purchase.

Mattress Selection Available

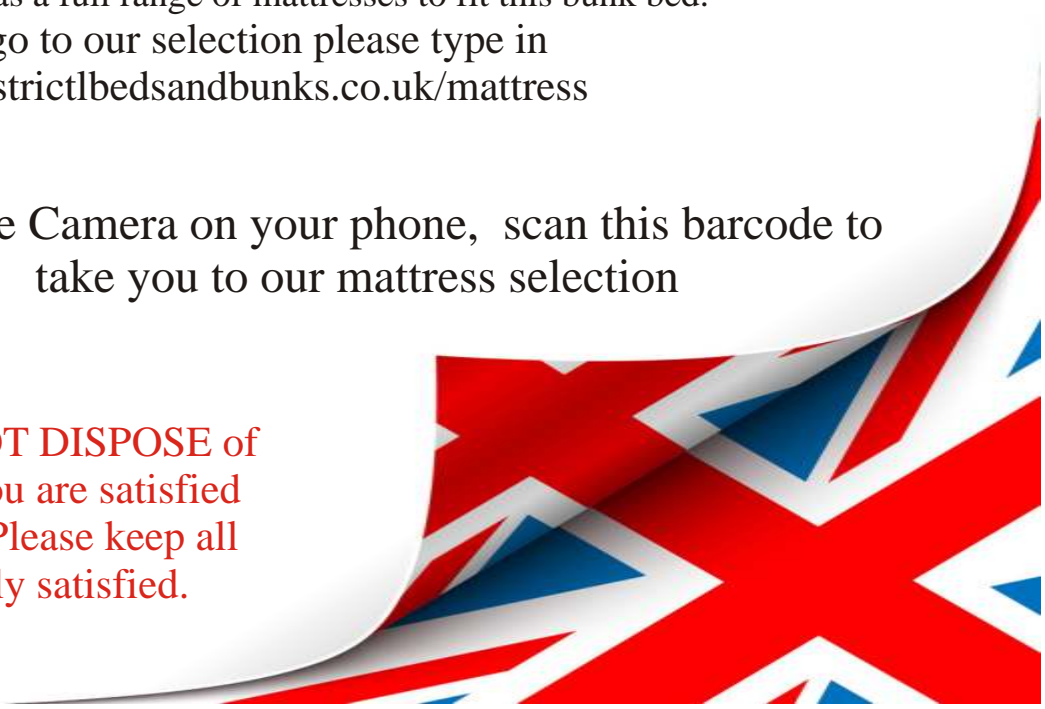
Strictly Beds has a full range of mattresses to fit this bunk bed.

To go to our selection please type in
www.strictlybedsandbunks.co.uk/mattress



Using the Camera on your phone, scan this barcode to take you to our mattress selection

IMPORTANT: DO NOT DISPOSE of the packaging until you are satisfied with your purchase.. Please keep all cardboard until fully satisfied.



Fixing List

Note: The quantities below are the correct amount to complete the assembly. In some cases more fittings may be supplied than required.



Fixing A1

Small sachet of glue for bolts B & C (NOT dowels)

Number Required 1



Fixing A2

70mm square wooden rail or base slat spacer

Number Required 1



Fixing A

40mm by 10mm Wooden Dowel Used to connect parts

Number required - 50



Fixing K

Allen Key To connect bolts

Number Required 1



Fixing B

14mm Barrel bolt/Nut Used to connect with bolt C

Number required 4



Fixing C

90mm Connector bolt Used to connect with bolt B

Number required 4



Fixing D

90mm Confirmat Bolt Used to connect headboards

Number required 10



Fixing E

30mm silver Screw Used to attach base slats

Number required 26



Fixing Q

35 mm small black screw

Number Required 4



Fixing F

50mm Confirmat Bolt Used to attach ladder steps

Number required 0

To ALL customers - If you have a missing or damaged bolt you can order these FREE of CHARGE using the following method, please note we will require your order number or delivery address
Email: help@strictlybedsandbunks.co.uk
Website: www.strictlyhelpdesk.co.uk
All fixings are sent out via next day Royal Mail Post

TOP TIPS - TOP TIPS

Read before you start assembly



Locating the Dowel Rods

To keep the bed from rattling all the dowel holes have been slightly mis-drilled by a couple of mm. When you push parts together the dowels will straighten and pull together to ensure a tight fit. Whenever you locate a dowel on the hole NEVER push it all the way in, leave it so it is loose and can be aligned with the second locating hole.

Push them all the way in and they will not line up.



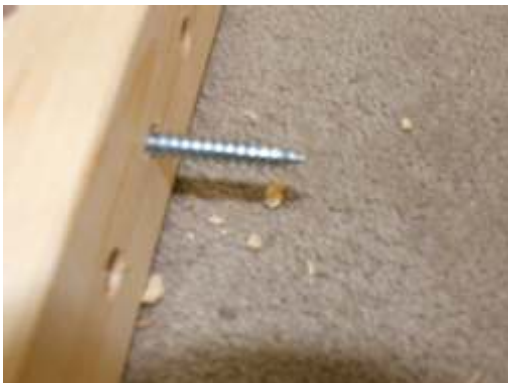
GLUE SACHET INCLUDED

We have included a sachet of glue.

THIS IS NOT TO BE USED with the dowel rods.

Open the sachet and empty into a plastic container.

Whenever you connect a confirmat bolt (D) or a connector bolt (B) into a barrel bolt (c) dip the end of the bolt in the wood glue and screw in as normal. This will act as a lock tight and prevent the bolt from working loose.



Clean out the Pre-drilled Holes

You have brought a solid pine product. During the drilling process there may be sawdust still in the holes.

BEFORE you start assembly clear these holes with one of the bolts. Push the bolt through each hole, this will dislodge any sawdust or debris that could interfere with fixing the bed.

Applying a Finish to the Beds

The bed can be used in a natural form. However if you are applying a stain or finish we advise that you build the bed first.

When you are happy with your purchase then put a sheet under the product and apply your stain/paint to the manufacturers recommendations.

NOTE: we are unable to accept the return, under any circumstance once a finish has been applied. By painting the bed you have deemed to accept the quality.



Corner Posts -

Make sure the WHITE Mark is facing upwards when laid on the floor

Headboard Facias-

These are colour coded
Please position as follows:

RED - At the top

WHITE - In the middle

BLUE - At the bottom



How to identify your parts and fixings

All our products have four attachment methods. These are colour coded, at the end of each part you will find a marker pen marking either RED, WHITE or BLUE (two types)



RED MARKING/FIXINGS

The part will have a red marker pen marking on the end.

Hole / Bolt configuration:

One large dowel hole - Place for large dowel
One small hole - Place for large 90cm confirmation bolt D

Areas this method is used:

Top front and back guard rails and top headboard facia



WHITE MARKING/FIXINGS

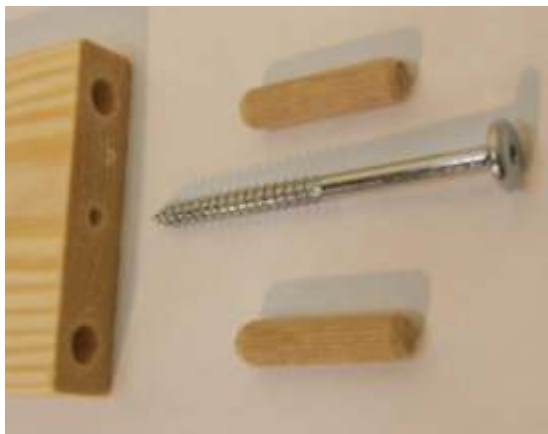
The part will have a white chalk marking on the end.

Hole / Bolt configuration:

TWO large dowel holes - Place for large dowel

Areas this method is used:

Bottom front and back guard rails and centre headboard facia



BLUE MARKING/FIXINGS -

The part will have a blue marker pen marking on the end.

Hole / Bolt configuration:

TWO large dowel holes - Place for large dowel
One small centre hole - Place for large 90mm connector bolt D



SIDE RAIL MARKING/FIXINGS

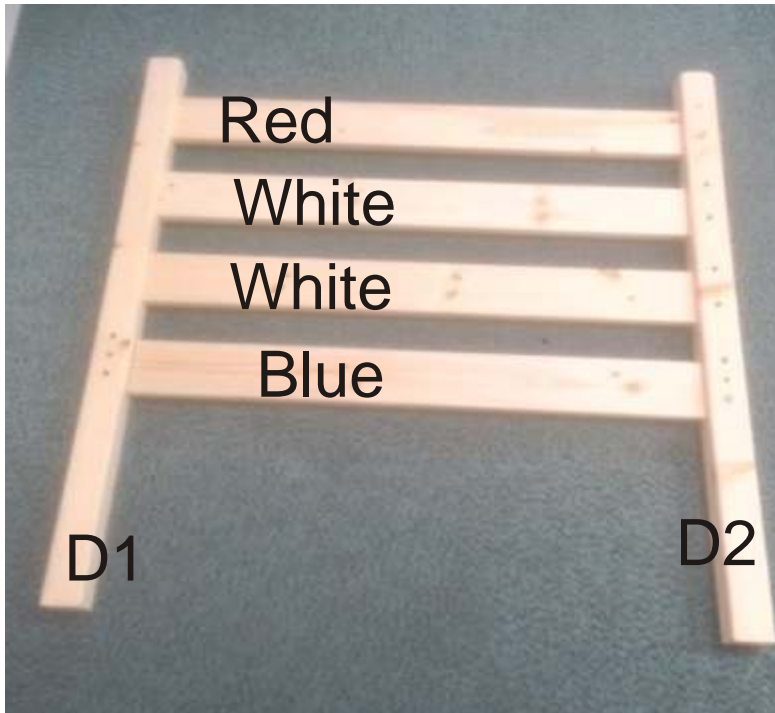
The part will have a blue marker pen marking on the end.

Hole / Bolt configuration:

TWO large dowel holes - Place for large dowel
One small centre hole - Place for large 90mm connector bolt C
Facing access hole - Place for barrel bolt B

Section 1 Build The Headboards

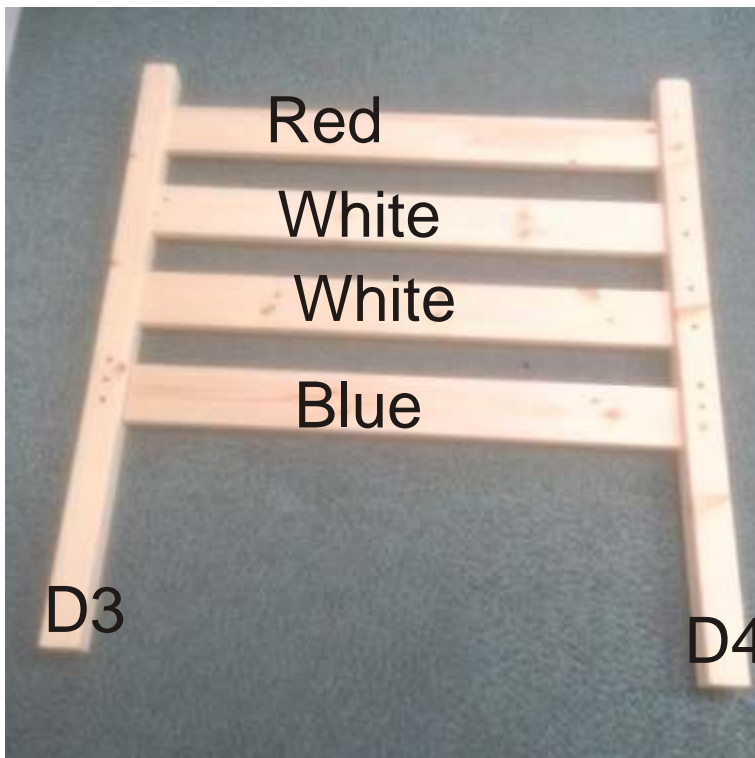
Important: When laying each corner post on the floor the white chalk mark **MUST** be facing you.



First we need to build the left hand headboard (as standing in front of the bed). Locate the following parts and position as per the photo:

Corner post D1 - left hand side
Corner post D2 - Right hand side
Red Head board Facia - Top
White Headboard Facia - 2nd from to
White Headboard Facia - 3rd from top
Blue Headboard Facia - Bottom

Using the bolts shown on page 4 attach to create headboard



Now we need to build the right hand headboard (as standing in front of the bed). Locate the following parts and position as per the photo:

Corner post D3 - left hand side
Corner post D4 - Right hand side
Red Head board Facia - Top
White Headboard Facia - 2nd from to
White Headboard Facia - 3rd from top
Blue Headboard Facia - Bottom

Using the bolts shown on page 4 attach to create headboard

Important: When laying each corner post on the floor the white chalk mark **MUST** be facing you.

Section 2- Attach Back Siderail



The white chalk marks for each headboard **MUST** be facing inward, naturally position L to your left (D1 & 2) and R to your right (D2 & 3)

The side rails are universal. Now find a side rail and attach the back one first, again using the fixings on page 4 attach.



Now we need to attach the remaining back guard rails. Again each part is colour coded at the end. Using page 4 as your guide locate each of the following and connect:

- Top - Red Guard Rail
- 2nd from top - White Guard Rail
- 3rd from top - White Guard Rail

Once located, tighten all the fixings including the back side rail



Now we need to attach the from side rail, again using the fixings on page 4 attach and tighten.



Now we need to attach the base slats

You will have twelve extra wide base slats. Push the first slat tight with the footboard corner posts, then using the base slat spacer block evenly space out the remaining base slats. **DO NOT SCREW IN PLACE YET.**



Now push the slats flush to the left hand side rail and screw in (do not screw the right hand side yet). Now go to the right hand side and start with the slat near the centre. Push the side rail in so the slat is flush, then fix using the screw. This aligns the side rail. Now fix the remaining base slats.

Attach support legs

We have supplied optional Side rail support legs. These strengthen the bed further to make the model for heavy duty use. This leg is optional but is recommended.

Measure a half way point on the side rail. Place the support leg under the side rail from the outside. Using two black screws attach from the inside of the side rail. Note there is no access hole as the screws are self threading

The centre leg will hover slightly off the floor, when the bed is in use it will move down and support the bed. This is to protect the leg if the bed moves.



If you have ordered a guest bed option simply do not attach the front side rail support leg.