



Single Size Kit B  
Double Size Kit A  
Instructions: 2/Ranch  
(Version March 2021)

## Assembly Instructions for Somerset, Samson, Avon, Kansas and Cleveland Beds

Assembly Instructions  
**IMPORTANT – READ CAREFULLY –  
RETAIN FOR FUTURE REFERENCE**

# CUSTOMER CARE

We have checked all parts to ensure they are free of damage. However timber is a natural, living product. Occasionally timber can still be adjusting to humidity, for this reason a crack or stretch mark may appear after the product has been packaged.

Strictly Beds and Bunks however have a **FREE PARTS REQUEST** service in this unlikely event. You need to order a part please go to

Aftersales Portal - [www.strictlyaftersales.co.uk](http://www.strictlyaftersales.co.uk)  
Email Assistance: [help@strictlybedsandbunks.co.uk](mailto:help@strictlybedsandbunks.co.uk)



Using the Camera on your phone scan this barcode to take you our after sales. You can find various options as regards assistance on this purchase.

## Mattress Selection Available

Strictly Beds has a full range of mattresses to fit this bunk bed.

To go to our selection please type in  
[www.strictlbedsandbunks.co.uk/mattress](http://www.strictlbedsandbunks.co.uk/mattress)



Using the Camera on your phone, scan this barcode to take you to our mattress selection

**IMPORTANT: DO NOT DISPOSE** of the packaging until you are satisfied with your purchase.. Please keep all cardboard until fully satisfied.



# TOP TIPS - TOP TIPS

## Read before you start assembly

### Locating the Dowel Rods

To keep the bed from rattling all the dowel holes have been slightly mis-drilled by a couple of mm. When you push parts together the dowels will straighten and pull together to ensure a tight fit. Whenever you locate a dowel on the hole NEVER push it all the way in, leave it so it is loose and can be aligned with the second locating hole.

Push them all the way in and they will not line up.



### GLUE SACHET INCLUDED

We have included a sachet of glue.  
THIS IS NOT TO BE USED with the dowel rods.

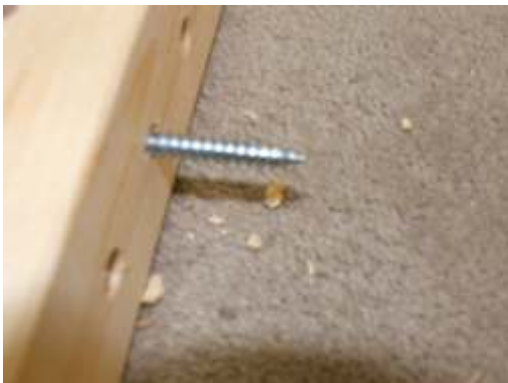
Open the sachet and empty into a plastic container. Whenever you connect a confirmat bolt (D) or a connector bolt (B) into a barrel bolt (c) dip the end of the bolt in the wood glue and screw in as normal. This will act as a lock tight and prevent the bolt from working loose.



### Clean out the Pre-drilled Holes

You have brought a solid pine product. During the drilling process there may be sawdust still in the holes.

BEFORE you start assembly clear these holes with one of the bolts. Push the bolt through each hole, this will dislodge any sawdust or debris that could interfere with fixing the bed.



### Applying a Finish to the Beds

The bed can be used in a natural form. However if you are applying a stain or finish we advise that you build the bed first. When you are happy with your purchase then put a sheet under the product and apply your stain/paint to the manufacturers recommendations.

NOTE: we are unable to accept the return, under any circumstance once a finish has been applied. By painting the bed you have deemed to accept the quality.



### Corner Posts -

Make sure the WHITE Mark is facing upwards when laid on the floor

Headboard Facias-

These are colour coded

Please position as follows:

RED - At the top

WHITE - In the middle

BLUE - At the bottom



# Fixing List

Note: The quantities below are the correct amount to complete the assembly. In some cases more fittings may be supplied than required. These are universal instruction so some fixings have different QTY's depending on size, ie single or double sizes.



**Fixing A1**  
Small sachet of glue for bolts B & C (NOT dowels)

Number Required 1



**Fixing A2**  
70mm wooden rail or base slat spacer

Number Required 1



**Fixing J**  
35mm gold bracket  
Used to hold centre rails

Single Size Model requires 0

Double Size Model requires 2



**Fixing A**  
40mm by 10mm Wooden Dowel  
Used to connect parts

Number required - 26



**Fixing K**  
Allen Key  
To connect bolts

Number Required 1



**Fixing B**  
14mm Barrel bolt/Nut  
Used to connect with bolt C

Single Size Model requires 4

Double Size Model requires 8



**Fixing L**  
Small silver 15mm screw  
For Bracket J

Single Size Model requires 0

Double Size Model requires 4



**Fixing C**  
90mm Connector bolt  
Used to connect with bolt B

Single Size Model requires 4

Double Size Model requires 8



**Fixing D**  
90mm Confirmat Bolt  
Used to connect headboards

Single Size Model requires 6

Double Size Model requires 2



**Fixing E**  
30mm silver Screw  
Used to attach base slats

Number required 30



**Fixing Q**  
Black screw  
For support legs

Number Required 6

In the rare event you are short of fixings you can order free of charge at [www.strictlyhelpdesk.co.uk](http://www.strictlyhelpdesk.co.uk)



Using the Camera on your phone scan this barcode to take you our after sales. You can find various options as regards assistance on this purchase.



# Bed Identifier

These instructions are for Four Beds, there is only a slight assembly difference for these models



## Somerset Range

Headboard Corner Posts SL LEFT SR (RIGHT)  
Foot Board Corner Post BL (LEFT) BR (RIGHT)  
(codes found on the bottom of each post)



## Cleveland & Thor Range

Headboard Corner Posts TL LEFT TR (RIGHT)  
Foot Board Corner Post BL (LEFT) BR (RIGHT)  
(codes found on the bottom of each post)



## Samson Range

Headboard Corner Posts TL LEFT TR (RIGHT)  
Foot Board Corner Post SBL (LEFT) SBR (RIGHT)  
(codes found on the bottom of each post)



## Avon & Kansas Range

Headboard Corner Posts BL LEFT BR (RIGHT)  
Foot Board Corner Post BL (LEFT) BR (RIGHT)  
(codes found on the bottom of each post)



## SAFETY NOTICE: WOODEN FLOORS

This bed uses support legs to ensure heavy duty use. If you are locating this bed on a laminate or wooden floor the bed may move/slip when in use. This movement may dislodge the support legs. You must therefore attach non-slip pads under each corner post to prevent this movement. These also protect your floor. You can scan this QR Code for details on how to purchase these.

## Consult Box Contents list for QTY

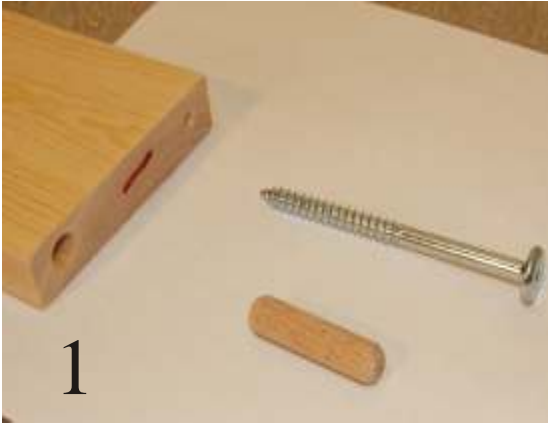


## Need Help Assembling This Product?

We have some videos online that may help you. Please scan this barcode using your phone or visit [www.strictlybedsandbunks.co.uk/assemblyhelp](http://www.strictlybedsandbunks.co.uk/assemblyhelp)

# How to identify your parts and fixings

All our products have four attachment methods. These are colour coded, at the end of each part you will find a marker pen marking either RED, WHITE or BLUE (two types)



## RED MARKING/FIXINGS

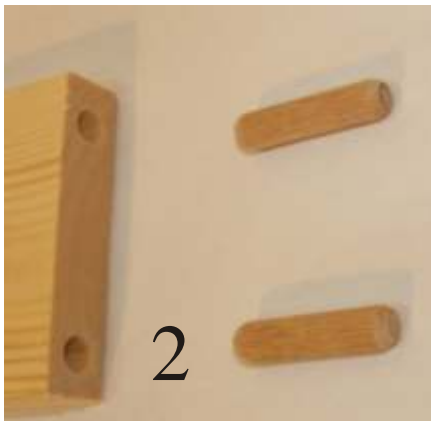
The part will have a red marker pen marking on the end.

Hole / Bolt configuration:

One large dowel hole - Place for large dowel  
One small hole - Place for large 90cm confirmation bolt D

Areas this method is used:

Top front and back guard rails and top headboard facia



## WHITE MARKING/FIXINGS

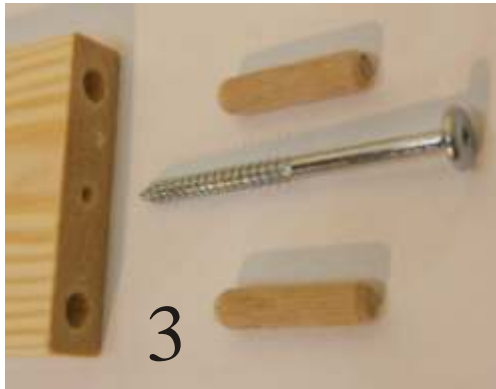
The part will have a white chalk marking on the end.

Hole / Bolt configuration:

TWO large dowel holes - Place for large dowel

Areas this method is used:

Bottom front and back guard rails and centre headboard facia



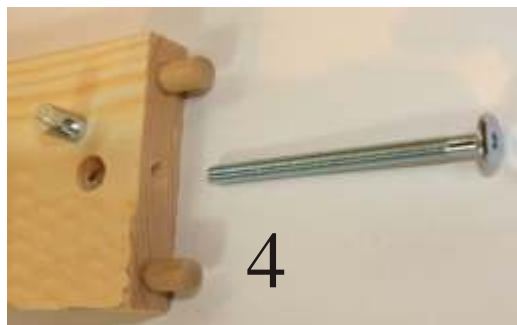
## BLUE MARKING/FIXINGS

**\*\*SINGLE BEDS ONLY\*\***

The part will have a blue marker pen marking on the end.

Hole / Bolt configuration:

TWO large dowel holes - Place for large dowel  
One small centre hole - Place for large 90mm connector bolt D



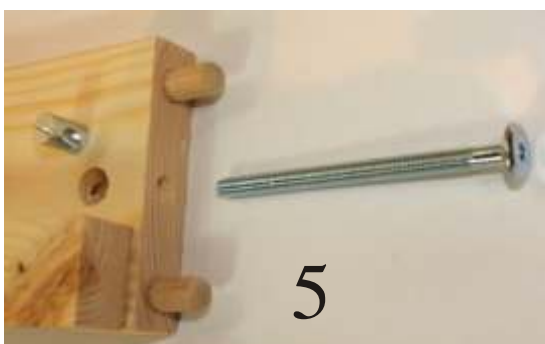
## BLUE MARKING/FIXINGS

**\*\* DOUBLE BEDS ONLY\*\***

The part will have a blue marker pen marking on the end.

Hole / Bolt configuration:

TWO large dowel holes - Place for large dowel  
One small centre hole - Place for large 90mm connector bolt C  
Facing access hole - Place for barrel bolt B bolt



## SIDE RAIL MARKING/FIXINGS

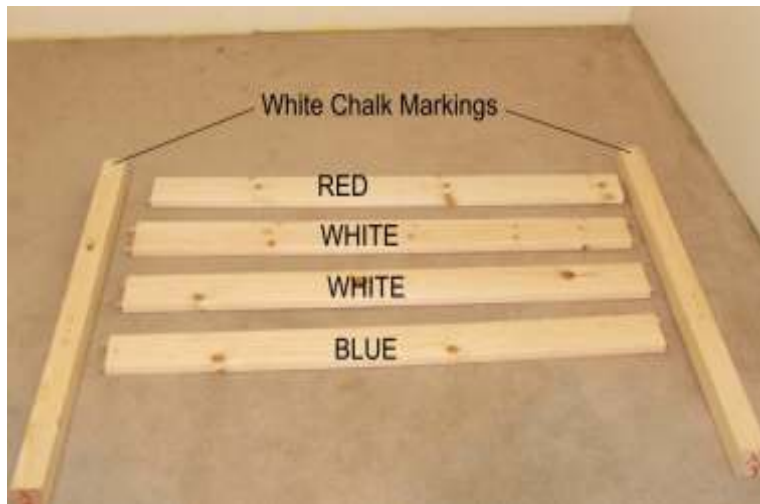
The part will have a blue marker pen marking on the end.

Hole / Bolt configuration:

TWO large dowel holes - Place for large dowel  
One small centre hole - Place for large 90mm connector bolt C

Facing access hole - Place for barrel bolt B

# First Build the Head Board



First Select the two headboard posts, See page 4 for corner post codes (post codes ending in L are Left side, ending in R are right side) Lay each post on the carpet, these posts will have a white chalk marking, these MUST be facing you and at the top when laying on the carpet.

Example is for Somerset Bed, however see below for other models. Position four Headboard Facias as shown in PIC 1. Place in this order from the top of the corner post, these will have colour codes at each end.

Part 15 - MARKED RED

Part 14 - MARKED WHITE

Part 14 - MARKED WHITE

Part 13 - MARKED BLUE



Now push the dowel rods in either side of these headboard facias. It is **IMPORTANT**, do not push these all the way in. Have them loose so they can angle when you attach. They will align when you attach to the post.



Now, remember to ensure the **WHITE CHALK** markings are facing upwards locate the dowel rods to each corner post. Again, do not push in the dowels all the way. Once in place connect the head board facias to the corner post, you will again see the dowels align as you tighten. Then fix using the bolts below.

Part 15 - MARKED RED

(see page 5, PIC 1 for fixings)

Part 14 - MARKED WHITE

Part 14 - MARKED WHITE

(see page 5, PIC 2 for fixings)

Part 13 - MARKED BLUE

(see page 5, PIC 3 for fixings)

## **CLEVELAND/THOR/SAMSON BED FRAME**

This model is the same as above except it has one less part 14 on the headboard.

Part 15 - MARKED RED

(see page 5, PIC 1 for fixings)

Part 14 - MARKED WHITE

(see page 5, PIC 2 for fixings)

Part 13 - MARKED BLUE

(see page 5, PIC 3 for fixings)



## **AVON / KANSAS MODELS**

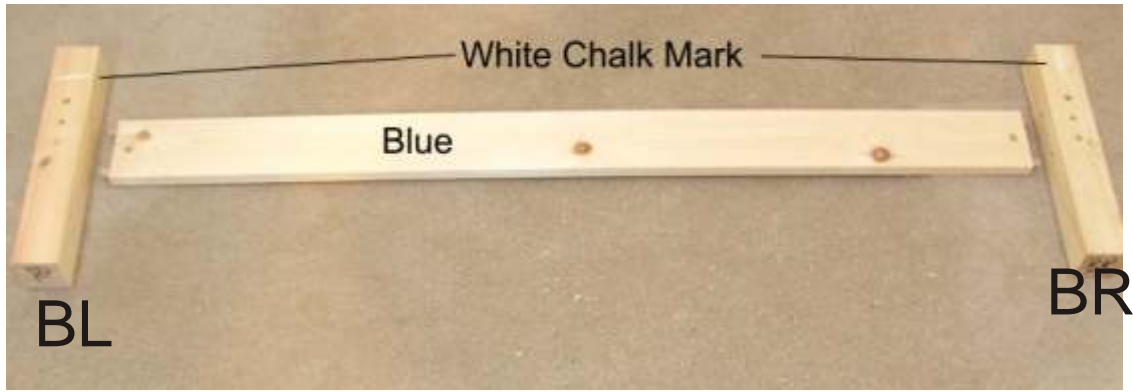
This model only has one headboard facia, Part 13.

Part 13 - MARKED BLUE

(see page 3, PIC 3 for fixings)



# Now We Build the Footboard



Each corner post will have a white chalk marking, lay the post down and have the markings facing you, at the top. BL goes to the left, BR goes to the right.  
Part 13 Blue (see page 5, FIG 3 or 2 for fixings)

**NOTE: THE SAMSON - Corner Post SBL to the left, SBR to the right side. This model has an EXTRA PART 14 (WHITE) to the footboard**

## Attach the two side rails



Firstly ensure there is no sawdust or debris in the access holes. Using a bolt push through to clear. Now insert the dowel rods at all ends, do not push all the way in.

Make sure the WHITE MARKINGS on each headboard are facing inwards. Now start with the headboard and connect each side rail to each corner post

Place the barrel bolt within the round access hole on the side rail. Now dip bolt B into the glue and push through to connect to the barrel bolt. This side rail is designed not too move so the fixing is tight. Then locate the footboard, again ensure the WHITE MARKINGS are facing inwards and connect. (See page 5, FIG 5 for fixings)

## Attach the side rail support legs ( The Kansas Has no Support Legs)



It is important this leg is attached as it supports the side rail. Measure a half way point on the side rail.

Place the support leg under the side rail from the outside. Using two black screws attach from the inside of the side rail. Note there is no access hole as the screws are self threading

**The centre leg will hover slightly off the floor, when the bed is in use it will move down and support the bed. This is to protect the leg if the bed moves.**



If you have ordered a guest bed simply do not attach the side rail support leg to the front. If you have ordered drawers still attach as instructed.

## Attach The Centre Rail (Double/Kingsize Beds ONLY)



From the inside of the bed we need to attach metal brackets, one either end. These are fixed using the small screws (L), these are fixed to bottom headboard fascia. Using a tape mark a centre line from each corner post, then measure and mark **55mm** from the top of the BLUE Facia(13). Now position the top of the bracket (J) just below this mark, attach with the small screw (L)

## Attach the centre rail support leg



The centre leg is located under the centre rail, in the centre. Simply measure to the centre of the bed and locate under the centre rail. Using two black screws attach from the side.



It is **IMPORTANT** that this is positioned correctly and remains in place while the bed is being used, failure to fix will weaken the bed. This part is manufactured using recycled timber as the component is out of sight. The centre leg will hover slightly off the floor, when the bed is in use it will move down and support the bed. This is to protect the leg if the bed moves.



## We Now need to attach the base slats.

You will have twelve extra wide base slats. Push the first slat tight with the footboard corner posts, then using the base slat spacer block evenly space out the remaining base slats. **DO NOT SCREW IN PLACE YET.**

Now push the slats flush to the left hand side rail and screw in (do not screw the right hand side yet). Now go to the right hand side and start with the slat near the centre. Push the side rail in so the slat is flush, then fix using the screw. This aligns the side rail. Now fix the remaining base slats.



**TIP:-**When you have attached the base slats you will have additional base slats screws. Out of the 12 slats screw 4 of them directly into the centre rail. Using the base slat screws simply drill through the top of the base slat into the centre rail. This will further strengthen the bed.