

Assembly Instructions

Single Panel Bed Frames



Bunk Beds

Four Poster Beds
 High Sleeper
 Beds
 Cabin Beds
 Storage Beds
 Mattresses
IN STOCK



IMPORTANT: DO NOT DISPOSE of the packaging until you are satisfied with your purchase. . Please keep all cardboard until fully assembled.



TOP TIPS - TOP TIPS

Read before you start assembly

Locating the Dowel Rods

To keep the bed from rattling all the dowel holes have been slightly mis-drilled by a couple of mm. When you push parts together the dowels will straighten and pull together to ensure a tight fit. Whenever you locate a dowel on the hole **NEVER** push it all the way in, leave it so it is loose and can be aligned with the second locating hole. Push them all the way in and they will not line up.



GLUE SACHET INCLUDED

We have included a sachet of glue.
THIS IS NOT TO BE USED with the dowel rods.

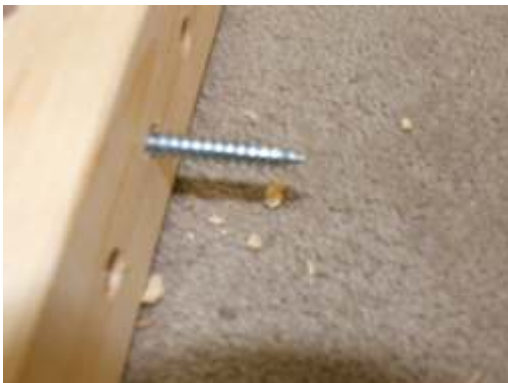
Open the sachet and empty into a plastic container. Whenever you connect a confirmat bolt (D) or a connector bolt (B) into a barrel bolt (c) dip the end of the bolt in the wood glue and screw in as normal. This will act as a lock tight and prevent the bolt from working loose.



Clean out the Pre-drilled Holes

You have brought a solid pine product. During the drilling process there may be sawdust still in the holes.

BEFORE you start assembly clear these holes with one of the bolts. Push the bolt through each hole, this will dislodge any sawdust or debris that could interfere with fixing the bed.



Applying a Finish to the Beds

The bed can be used in a natural form. However if you are applying a stain or finish we advise that you build the bed first. When you are happy with your purchase then put a sheet under the product and apply your stain/paint to the manufacturers recommendations.

NOTE: we are unable to accept the return, under any circumstance once a finish has been applied. By painting the bed you have deemed to accept the quality.



Corner Posts -

Make sure the **WHITE** Mark is facing upwards when laid on the floor

Headboard Facias-

These are colour coded
Please position as follows:

RED - At the top

WHITE - In the middle

BLUE - At the bottom



How to identify your parts and fixings

All our products have four attachment methods. These are colour coded, at the end of each part you will find a marker pen marking either RED, WHITE or BLUE



RED MARKING/FIXINGS

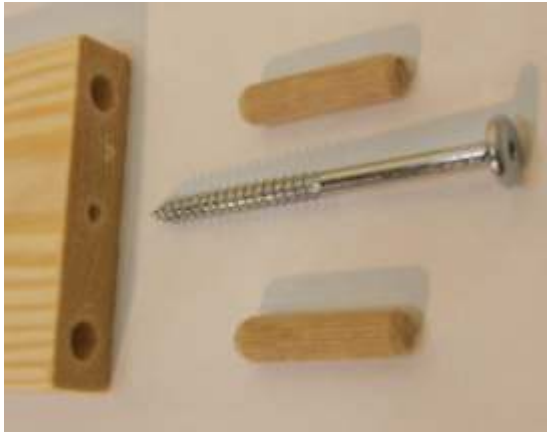
The part will have a red marker pen marking on the end.

Hole / Bolt configuration:

One large dowel hole - Place for large dowel

One small hole - Place for large 90cm confirmation bolt D

Areas used: top headboard facia



BLUE MARKING/FIXINGS -

The part will have a blue marker pen marking on the end.

Hole / Bolt configuration:

TWO large dowel holes - Place for large dowel

One small centre hole - Place for large 90mm connector bolt D

Area Used: Bottom headboard Facia



SIDE RAIL MARKING/FIXINGS

The part will have a blue marker pen marking on the end.

Hole / Bolt configuration:

TWO large dowel holes - Place for large dowel

One small centre hole - Place for large 90mm connector bolt C

Facing access hole - Place for barrel bolt B



INSERTING COLOUR PANEL

When locating the colour panel please ensure the tongue of the panel is located at the back, ie on the floor during assembly. This then covers unused holes within the corner post.

Fixing List for assembly- Please note we use universal assembly kits. You may find additional fixings left over or not required, please dispose once the assembly has completed.



Fixing A1

Small sachet of glue for bolts B & C (NOT dowels)

Number Required **1**



Fixing A2

70mm square wooden rail or base slat spacer

Number Required **1**



Fixing A

40mm by 10mm Wooden Dowel Used to connect parts

Number required - **42**



Fixing K

Allen Key To connect bolts

Number Required **1**



Fixing B

14mm Barrel bolt/Nut Used to connect with bolt C

Number required **4**



Fixing C

90mm Connector bolt Used to connect with bolt B

Number required **4**



Fixing D

90mm Confirmat Bolt Used to connect headboards

Number required **6**



Fixing E

30mm silver Screw Used to attach base slats

Number required **24**



Fixing Q

35 mm small black screw To connect centre or siderail leg

Number Required **4**

CUSTOMER CARE

We have checked all parts to ensure they are free of damage. However timber is a natural, living product. Occasionally timber can still be adjusting to humidity, for this reason a crack or stretch mark may appear after the product has been packaged.

Strictly Beds and Bunks however have a **FREE PARTS REQUEST** service in this unlikely event. You need to order a part please go to

Parts Portal - www.strictlyhelpdesk.co.uk.

Email Assistance: help@strictlybedsandbunks.co.uk



Using the Camera on your phone scan this barcode to take you our after sales. You can find various options as regards assistance on this purchase.



Packing Note: Box 1 of 1 Cleveland Colour Panel Bed

Description	Required
Part BS - Pack of 12 x Single Base Slats	1
Part 1 - Long Side rail	2
Part 13- Blue Headboard	1
Part 13G- Blue GROOVE Headboard	1
Part 15G- Red GROOVE Headboard	1
Part BP30 - COLOUR PANEL Headboard Panel	1
Part TL Left Corner Headboard Post	1
Part TR Right Corner Headboard Post	1
Part BL Left Footboard Corner Post	1
Part BR Right Footboard Corner Post	1
Part 25- Siderail Support Legs	2
FIXING KIT & INSTRUCTIONS 34B	1

CORNER POSTS - IMPORTANT - READ ME



All corner posts will have WHITE chalk markings on them with “L” or “R” on the bottom of each post. To ensure the holes match you MUST have the WHITE mark facing upwards when laying on the carpet. The “L” post to the left, the “R” post to the right. Headboards fit in order, from the top -
RED and, BLUE

**** If in the wrong order the holes will not match up.****

Build the headboard



We need to build the two headboards at either end of the bunk bed. You will find four corner posts, two marked L-left, two marked R-right.. Separate into two piles, one left and one right.

Get one left and one right and lay as so face down on the carpet as shown above. You will note a white chalk mark on each post, very important. This indicates the top of each post and the row of holes that accepts the side/ guard rails.

You will have two headboard facias marked red and blue and a colour panel per headboard. Place the blue fascia at the bottom, then insert the panel the red fascia at the top. The colour panel has a tongue and groove lip, ensure this at the bottom facing downwards. Once in position Insert these as per this picture. The fixings required for each insert are as follows:

Red: 1 x large confirmat 1 x Dowel rod

Blue: 1 x large confirmat 2 x Dowels

Build the Foot Board



Each corner post will have a white chalk marking, lay the post down and have the marking facing you to the top. BL goes to the left, BR goes to the right. Now grab the headboard insert 1x 13 (blue) and attach

Attach the side rails



The side rails are universal, left or right. Firstly ensure there is no sawdust or debris in the access holes. Using a bolt push through to clear. Now insert the dowel rods at all ends, do not push all the way in.

With the help of a second person start from the right side and attach to the head and footboard to the side rails. Place the barrel bolt within the round access hole on the side rail. Now dip bolt B into the glue and push through to connect to the barrel bolt. This side rail is designed not too move so the fixing is tight.

Attach support legs



It is important this leg is attached as it supports the side rail.

Measure a half way point on the side rail. Place the support leg under the side rail from the outside. Using two black screws attach from the inside of the side rail. Note there is no access hole as the screws are self threading

The centre leg will hover slightly off the floor, when the bed is in use it will move down and support the bed. This is to protect the leg if the bed moves.



Note: If you have ordered a guest bed simply do not attach the front side rail support leg to the front Side rail. If you have ordered a storage option further instructions and fixings will be found in a separate box.

Attach the base slats



You will have twelve extra wide base slats. Push the first slat tight with the footboard corner posts, then using the base slat spacer block evenly space out the remaining base slats. **DO NOT SCREW IN PLACE YET.**

Now push the slats flush to the left hand side rail and screw in (do not screw the right hand side yet). Now go to the right hand side and start with the slat near the centre. Push the side rail in so the slat is flush, then fix using the screw. This aligns the side rail. Now fix the remaining base slats.

Mattress Selection Available

Strictly Beds has a full range of mattresses to fit this bunk bed. This model has been designed to take a thicker 20cm mattress.

To go to our selection please type in www.strictlbedsandbunks.co.uk/mattress

Using the Camera on your phone scan this barcode to take you our mattress selection

